

NOTES

- ① INTERMEDIATE FREQUENCY 575 KC.
- ② RANGE SWITCH (S1 TO S10) SHOWN IN COUNTER CLOCKWISE POSITION (RANGE "A" LOOKING FROM FRONT END).
- ③ SELECTIVITY SWITCH (S11 & S12) SHOWN IN COUNTER CLOCKWISE POSITION (RANGE "SEL" LOOKING FROM FRONT END).
- ④ ↓ DENOTES CHASSIS

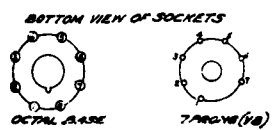
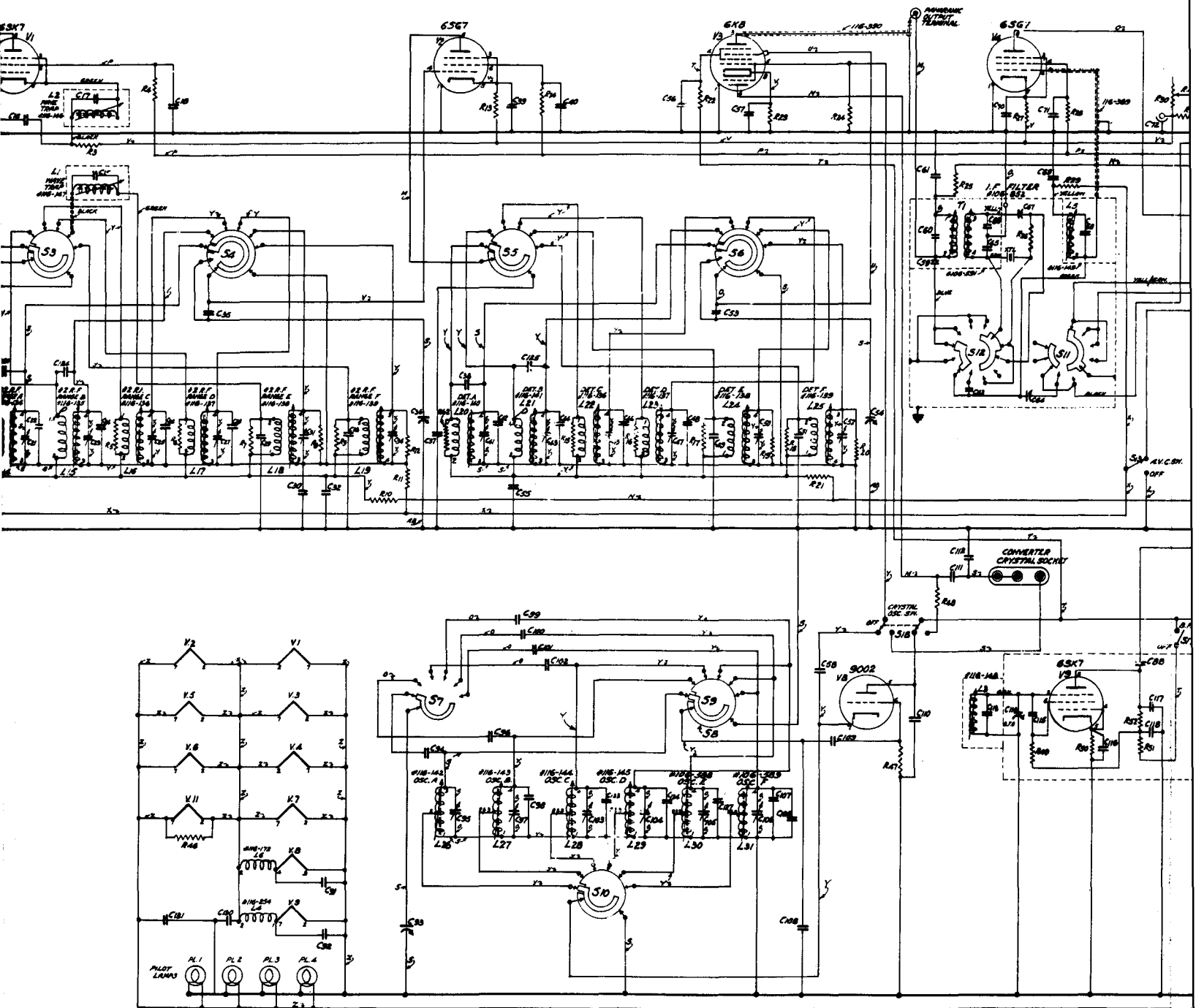


DIAGRAM OF CONNECTIONS CSR-SA RECEIVER.

FIG. 41



WIRE LEGEND.

- | | |
|--|--|
| A - CABLE #11-250 | U - #103-528, WIRE SPEC #843 (GREEN) |
| B - #11-251 | V - #848 (GRAY) |
| C - #11-252 | M - #851 (BLACK-RED) |
| D - #11-253 | X - #851 (BROWN) |
| E - #11-254 | Y - #852 (GREEN-YELL) |
| F - #11-255 | Z - #103-528, WIRE SPEC #840-B (BL YCN) |
| G - #11-256 | AB - #103-528 (4000) FLEX COTTON WIRE SPEC. LIBR 10, NO. 400118, BLACK |
| H - #11-257 | |
| J - #11-258 | |
| K - #11-259 | |
| L - #103-528, WIRE SPEC #840 (BLACK) | |
| M - #848 (BLUE) | |
| N - #848 (RED) | |
| O - #80 BARE, THINLED, SOLID, CU, WIRE, SOFT | |
| P - #103-528, WIRE SPEC #844 (YELLOW) | |
| Q - #856 (RED-YELL) | |
| R - #856 (GREEN-YELL) | |
| S - #14 BARE, THINLED, SOLID, CU WIRE, SOFT | |
| T - #103-528, WIRE SPEC #854 (RED-WHITE) | |

NOTES

- ① INTERMEDIATE FREQUENCY 575 KC.
- ② RANGE SWITCH (S1 TO S10) SHOWN IN COUNTER CLOCKWISE POSITION (RANGE A) LOOKING FROM FRONT END.
- ③ SELECTIVITY SWITCH (S11) SHOWN IN COUNTER CLOCKWISE POSITION (RANGE 1) LOOKING FROM FRONT END.
- ④ ↓ DENOTES CHASSIS

BOTTOM VIEW OF SOCKETS

